

REPLAT OF BOYNTON COMMONS P.C.D.

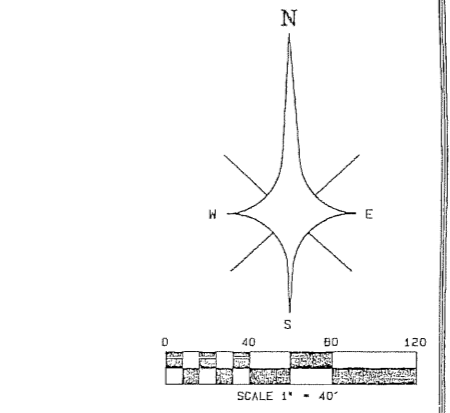
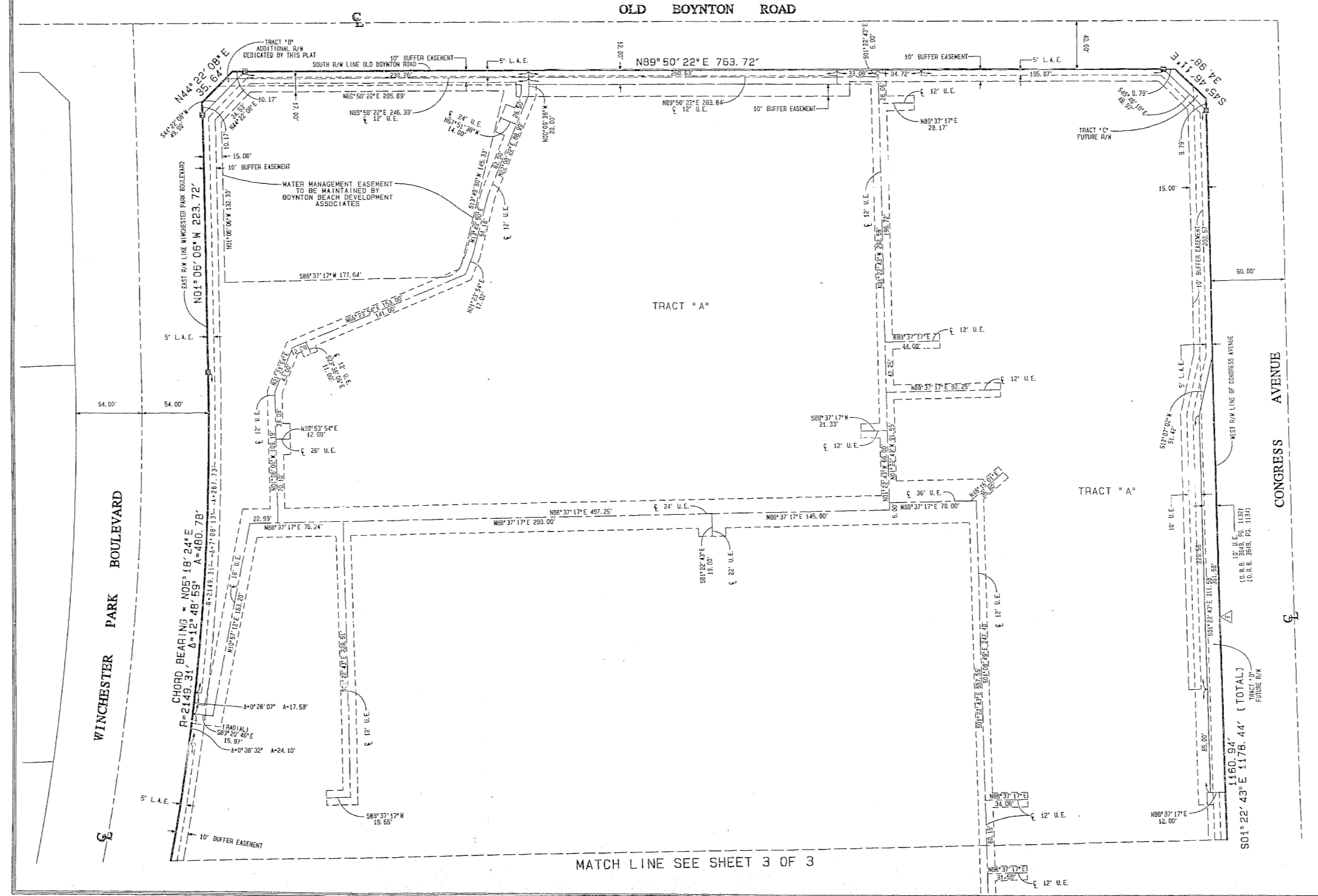
A PLANNED COMMERCIAL DEVELOPMENT SITUATE IN SECTIONS 19 AND 30, TOWNSHIP 45 SOUTH, RANGE 43 EAST BEING A REPLAT OF "BOYNTON COMMONS P.C.D.", AS RECORDED IN PLAT BOOK 80 PAGES 14 THROUGH 16, OF THE PUBLIC RECORDS OF PALM BEACH COUNTY, FLORIDA.

CITY OF BOYNTON BEACH,
PALM BEACH COUNTY, FLORIDA

JULY, 1997

STATE OF FLORIDA } SS
 COUNTY OF PALM BEACH }
 THIS PLAT WAS FILED FOR
 RECORD AT _____ BY _____
 THIS _____ AD _____ AND
 GOVERNED BY _____ AND
 _____ ON PAGES _____ AND

 DOROTHY H. WILKEN, CLERK
 CIRCUIT COURT
 BY: _____ DC



- LEGEND:
- ▲ - CENTRAL ANGLE/DELTA
 - - CENTERLINE
 - - CHORD
 - - CHORD BOOK
 - - CURVING EASEMENT
 - P.F.L. - FLORIDA POWER AND LIGHT COMPANY
 - L.A.E. - LIGHT ACCESS EASEMENT
 - L.M.A. - LAND MAINTENANCE ACCESS EASEMENT
 - L.W.E. - LAND WORK EASEMENT
 - L.S.D. - LAND SURVEY DISTRICT
 - R.P. - ROAD
 - R.P.B. - RIGHT OF WAY
 - P.O. - POINT OF BEGINNING
 - P.O.C. - POINT OF COMMENCEMENT
 - R. - RADIUS (RIGHT)
 - R.L. - RADIAL TO REAR LOT LINE
 - R.O. - RIGHT OF WAY
 - U.E. - UTILITY EASEMENT
 - W.C. - WETLAND CORNER
- - PERMANENT CONTROL POINT (PCP)
SET PPM #2110
 - - PERMANENT REFERENCE MONUMENT (PRM)
SET PPM #2219
 - △ - DENOTES FRONT OF PROJECT IN REGARDS TO BEACH REQUIREMENTS OF THE CITY OF BOYNTON BEACH, FLORIDA.

THERE MAY BE ADDITIONAL RESTRICTIONS OF RECORD, WHICH ARE NOT SHOWN ON THIS PLAT

PROFESSIONAL SURVEYORS AND MAPPERS

ATLANTIC - CARIBBEAN MAPPING, INC.

3062 3062 ROAD, GREENWICH, FLORIDA 33407
 (561) 964-7884 FAX (561) 964-1888